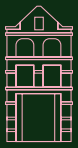




CARMELITE HOUSE

B L A C K F R I A R S

8,629 sq ft contemporary office space in unique Grade II listed building

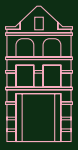


CARMELITE HOUSE

HISTORIC AND STYLISH

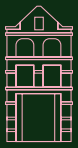
Located on the bank of the Thames, Carmelite House is a striking Grade II Tudor gothic style building offering 8,629 sq ft contemporary workspace over 6 floors. A grand entrance, feature staircase and period features create a unique office building. The building has undergone a comprehensive refurbishment including end-of-trip facilities, new kitchenettes and air conditioning, which has resulted in an improved EPC rating of B.





CARMELITE HOUSE



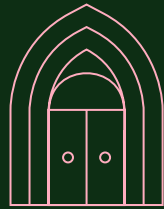


CARMELITE HOUSE

HIGHLIGHTS



Newly refurbished



Unique self-contained
building



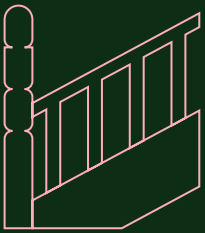
Air-conditioning



Period features



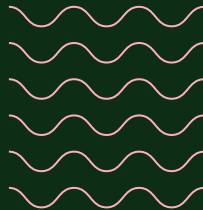
EPC B



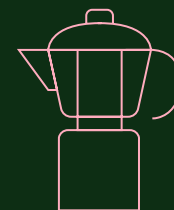
Feature staircase



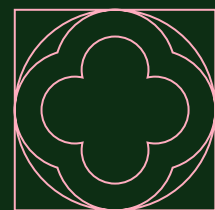
End-of-trip facilities



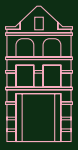
River views



New kitchenettes



Grade II listed



CARMELITE HOUSE





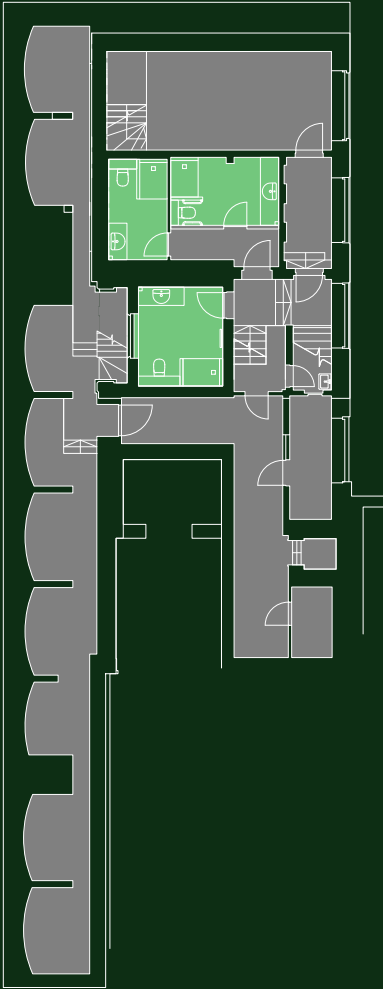
- Office Space
- Reception Area
- Core
- WCs/Showers

AVAILABILITY

FLOOR	SQ FT	SQ M
5TH	778	72.28
4TH	1,656	153.85
3RD	1,737	161.37
2ND	1,780	165.37
1ST	1,720	159.79
G	557	51.75
LG	25	2.32
TOTAL	8,253	766.73

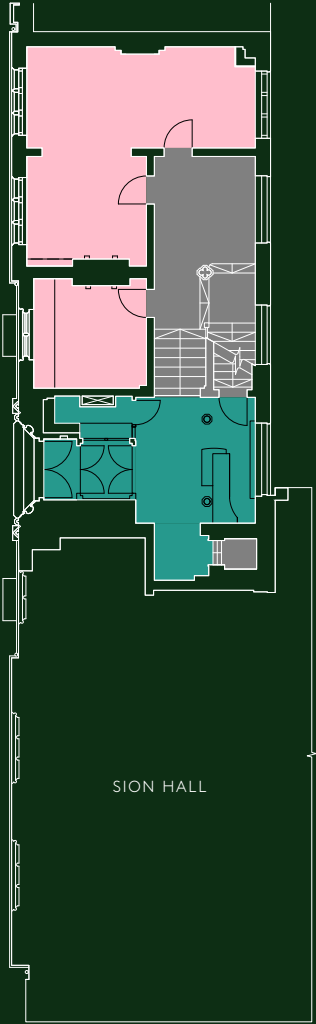
LG

25 SQ FT
2.32 SQ M



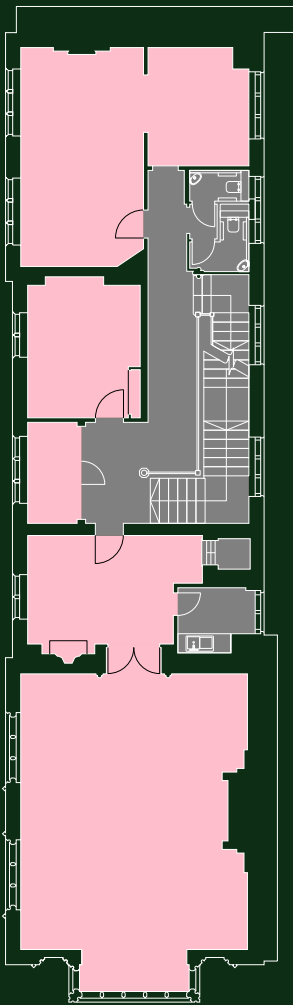
G

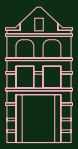
557 SQ FT
51.75 SQ M



1ST

1,720 SQ FT
159.79 SQ M



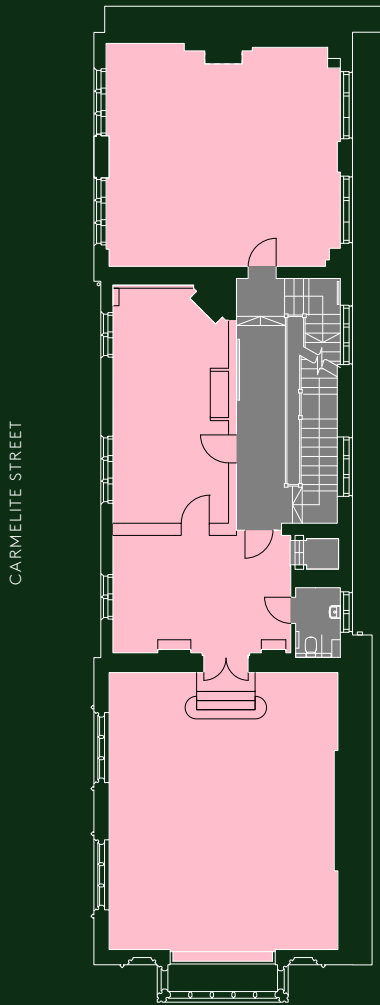


CARMELITE HOUSE

- Office Space
- Reception Area
- Core
- WCs/Showers

2ND

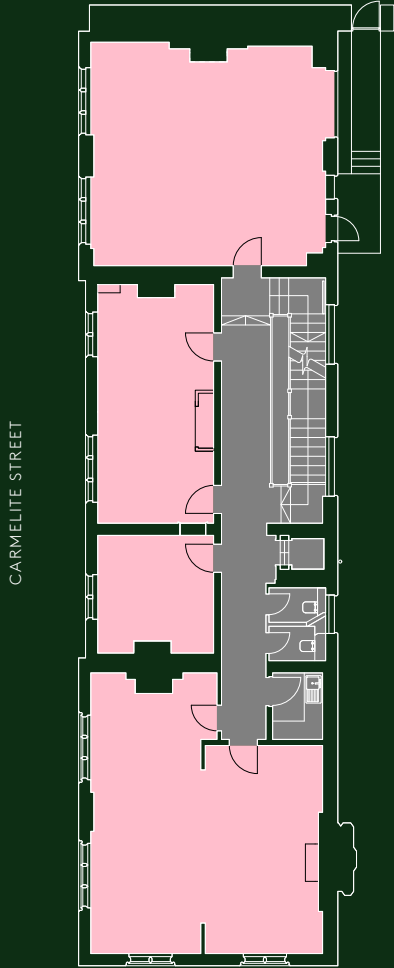
1,780 SQ FT
165.37 SQ M



VICTORIA EMBANKMENT

3RD

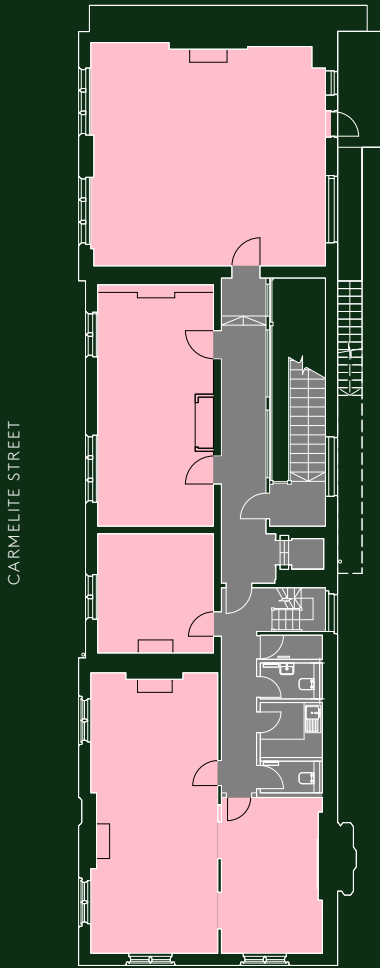
1,737 SQ FT
161.37 SQ M



VICTORIA EMBANKMENT

4TH

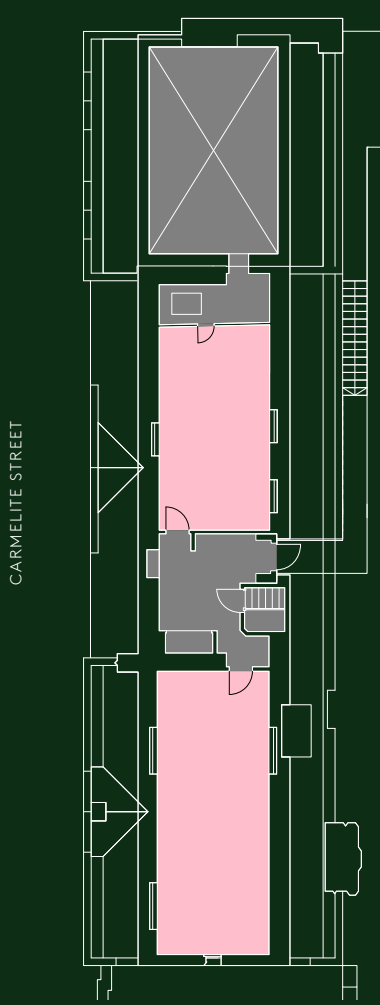
1,656 SQ FT
153.85 SQ M



VICTORIA EMBANKMENT

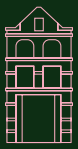
5TH

778 SQ FT
72.28 SQ M



VICTORIA EMBANKMENT





CARMELITE HOUSE

FROM CAFÉS TO CULTURE

The building is perfectly placed with retail at One New Change, culture on The Southbank and green space at Temple Gardens. It is also surrounded by some of the best restaurants with Cigalon, Brasserie Blanc and Roka moments away. There is also excellent connectivity with National Rail, Underground, Elizabeth Line and Uber Boat moments away.





LINCOLN'S INN
FIELDS

Lucky Voice

NEW STREET
SQUARE

FARRINGDON
13 MINS

ST PAUL'S
15 MINS

ST PAUL'S CATHEDRAL
One New Change

CITY
THAMESLINK
7 MINS

CARMELITE HOUSE

BLACKFRIARS
4 MINS

UBER BOAT
12 MINS

TEMPLE
7 MINS

TEMPLE
GARDENS

RIVER THAMES

BERNIE SPAIN
GARDENS

TATE
MODERN

SOUTHBANK
CENTRE

STAMFORD STREET

SOUTHWARK STREET

KINGSWAY

FLEET STREET

FARRINGDON STREET

NEWGATE STREET

ST PAUL'S CHURCHYARD

CARTER LN

ALDWYCH

STRAND

CARMELITE ST

BLACKFRIARS BRIDGE

MILLENNIUM BRIDGE

WATERLOO BRIDGE

SOHO Coffee Co

Coopers

Peacock Theatre

The Seven Stars

Cigalon

Brasserie Blanc

Gaucha

Apex Temple Court

CORD by
Le Cordon Bleu

Paternoster
Chop House

ROKA

The Delaunay

The Fleet Street Press

Daly's Wine Bar

The Amicable Society
of Lazy Ballerinas

Roasting Plant Coffee

180 Studios

Toklas

SOMERSET
HOUSE

The Blackfriar

Hyatt Regency

Leonardo Royal

The Wren Coffee

The Westin

OXO Tower

Sea Containers

FCB Coffee

Bankside Hotel

Black Sheep Coffee

National Theatre

Mulberry Bush

BFI Cinema

Hayward Gallery

Sticky Mango

The Hoxton

Gail's

Capricci

Tonkotsu



CARMELITE HOUSE

CONTACT US

BH₂



Daisy Walder

daisyw@bh2.co.uk
07425 828 376

Jack Beeby

jackb@bh2.co.uk
07841 802 097

Alys Thomas

alys.thomas@colliers.com
07595 034 642

Mark Radford

mark.radford@colliers.com
07730 318 148

Charlie Collins

charlie.collins@colliers.com
07759 121 247

Important notice relating to the Misrepresentation Act 1967 and the Property Misdescriptions Act 1991: (i) the particulars are set out as a general outline only for guidance of intending purchasers or lessees and do not constitute, nor constitute part of, an offer or contract (ii) all descriptions, dimensions, references to condition and necessary permission for use and occupation, and other details are given in good faith and are believed to be correct, but any intending purchasers or occupiers should not rely on them as statements or representations of fact, but must satisfy themselves by inspection or otherwise as to the correctness of each of them. October 2023.

Design and production: www.stuartchapmandesign.co.uk 020 3983 1665